

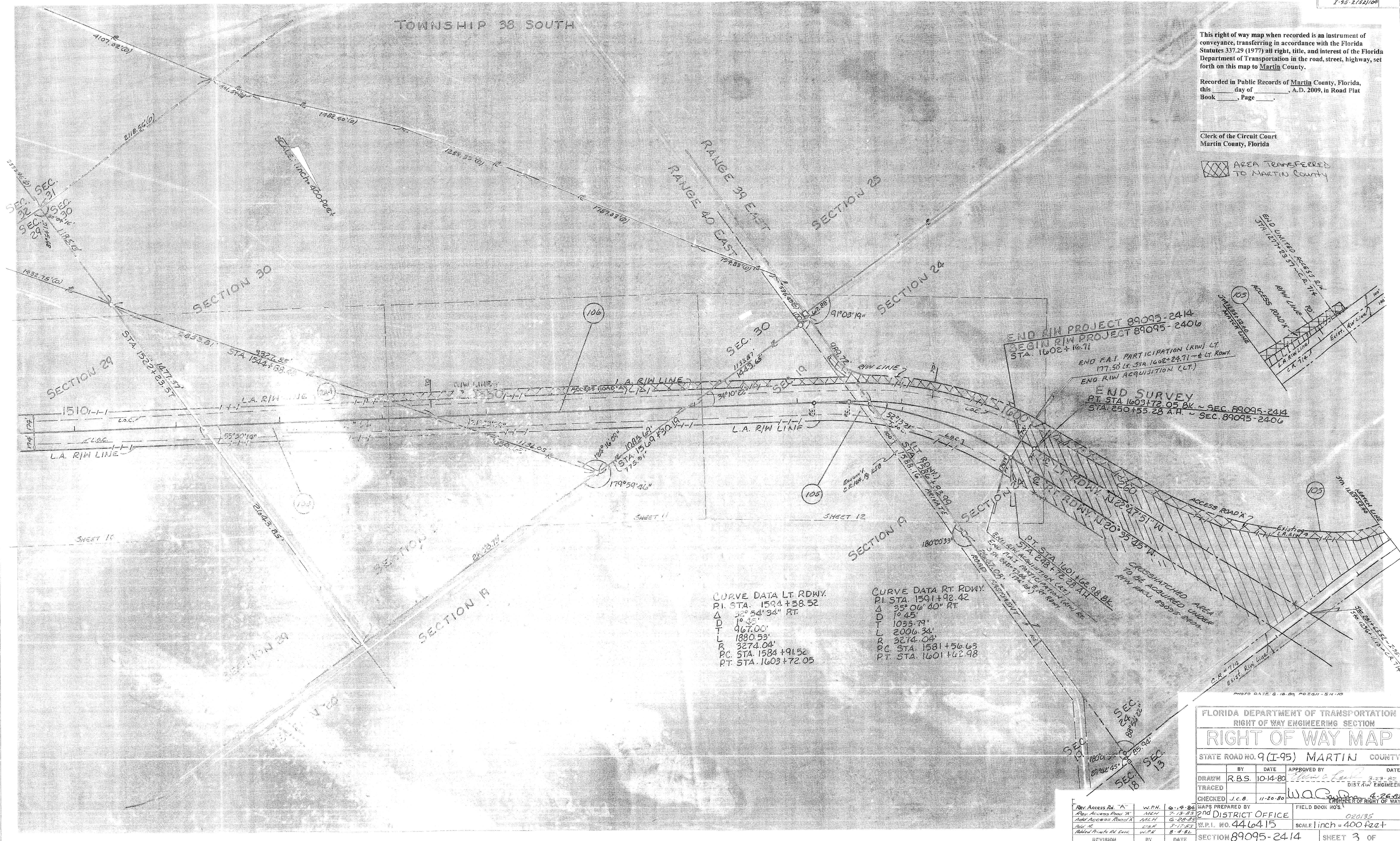
TOWNSHIP 38 SOUTH

This right of way map when recorded is an instrument of conveyance, transferring in accordance with the Florida Statutes 337.29 (1977) all right, title, and interest of the Florida Department of Transportation in the road, street, highway, set forth on this map to Martin County.

Recorded in Public Records of Martin County, Florida, this \_\_\_\_\_ day of \_\_\_\_\_, A.D. 2009, in Road Plat Book \_\_\_\_\_, Page \_\_\_\_\_.

Clerk of the Circuit Court  
Martin County, Florida

AREA TRANSFERRED TO MARTIN COUNTY



CURVE DATA LT. RDWY.  
 P.I. STA. 1594+58.52  
 Δ 32° 54' 34" RT.  
 D 1° 45'  
 T 967.00'  
 L 1880.53'  
 R 3274.04'  
 P.C. STA. 1584+91.52  
 P.T. STA. 1603+72.05

CURVE DATA RT. RDWY.  
 P.I. STA. 1591+92.42  
 Δ 35° 06' 40" RT.  
 D 1° 45'  
 T 1033.79'  
 L 2006.34'  
 R 3274.04'  
 P.C. STA. 1581+56.63  
 P.T. STA. 1601+62.98

FLORIDA DEPARTMENT OF TRANSPORTATION  
 RIGHT OF WAY ENGINEERING SECTION

RIGHT OF WAY MAP

STATE ROAD NO. 9 (I-95) MARTIN COUNTY

BY	DATE	APPROVED BY	DATE
DRAWN R.B.S.	10-14-80	<i>[Signature]</i>	3-23-82
TRACED			DIST. ENGR.
CHECKED J.C.B.	11-20-80	<i>[Signature]</i>	4-26-82

REVISION	BY	DATE	WAPS PREPARED BY	FIELD BOOK NO'S
Rev. Access Rd. "A"	W.P.H.	6-19-84	2nd DISTRICT OFFICE	020135
Rev. Access Road "A"	M.C.H.	7-13-83	W.P.I. NO. 446415	SCALE 1 inch = 400 feet
Rev. Access Road "A"	M.C.H.	6-29-83	SECTION 89095-2414	SHEET 3 OF
Rev. Access Road "A"	M.C.H.	7-11-83		
Rev. Access Road "A"	M.C.H.	8-4-82		